

AGNICE

CONTRACTING L.L.C

BUILT TO DELIVER



www.agnice.com/ae



AGENDA

- ABOUT US
- LEADERSHIP & OPERATIONS TEAMS
- SHOWCASING OUR FLAGSHIP CUSTOMERS
- COMPETITIVE EDGE
- VALUES, EXPERTISE & POLICIES
- AWARDS & CERTIFICATES
- SUSTAINABILITY RESPONSIBILITY
- ONGOING PROJECTS
- MAJOR COMPLETED PROJECTS



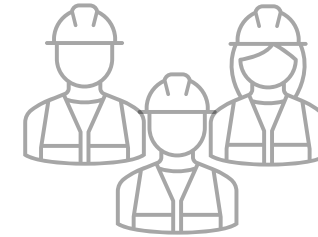
WHO WE ARE

We specialize in the turnkey construction of large-scale industrial facilities in the UAE.

From concept to completion, we ensure seamless execution, technical precision and on-time delivery, backed by robust project management and industry-leading standards.

Significant milestones

- 1992
Established
- 100+
Satisfied Clients
- 7.5 Mn+ Sq. Ft
Successfully delivered
- 750+
Employees
- 20+
Anchor Clients



Celebrating over 3 decades of excellence as a trusted construction partner in the UAE

A legacy of confidence and unwavering commitment to shaping Dubai's industrial landscape

Contributed to the UAE's growth through impactful projects and long-lasting relationships



WHAT WE AIM FOR

OUR VISION



To be amongst the top 5 mid-segment EPC companies in the UAE's niche markets, recognized as the preferred contractor for value-added projects through excellence in quality, sustainability, timely delivery and digital innovation



OUR COMPANIES



OUR ACTIVITIES

We are licensed by the Government of Dubai to perform all activities as required in the industrial construction business



رخصة تجارية / Commercial License			
تفاصيل الرخصة / License Details			
License No.	216821	رقم الرخصة	
Company Name	AGNICE CONTRACTING LLC	اسم الشركة	أجنيس للمقاولات ش.م.م
Business Name	AGNICE CONTRACTING LLC	الاسم التجاري	أجنيس للمقاولات ش.م.م
License Category	Dep. of Economic Development	فئة الرخصة	دائرة التنمية الاقتصادية
Legal Type	Unlimited Liability Company - Single Owner(LLC - SO)	الشكل القانوني	شركة ذات مسؤولية محدودة - الشخص الواحد (ش.م.م)
Expiry Date	24/02/2026	تاريخ الانتهاء	Issue Date 18/05/1975
D&B D-U-N-S # No	534544085	الرقم العالمي	Main License No. 216821
Register No.	54848	رقم السجل التجاري	DCI No. 13912
		عضوية الغرفة	

الأطراف / License Members			
Share / الحصص	Role / الصلة	Nationality / الجنسية	Name / الاسم / رقم الشخص/No.
100.00%	Shares Owner / مالك	الهند / India	عاسم امير ماثبات امير احمد
	Manager / مدير	الهند / India	عاسم امير ماثبات امير احمد

Print Date 04/02/2025 1561 تاريخ الطباعة Receipt No. يمكنك الآن تجديد رخصتك التجارية من خلال الرسائل القصيرة أرسل رقم الرخصة إلى 0909 (دو/تساعات) للحصول على أذن الدفع. Get FREE access to Zoho One for the first year! أرسل على رقم 9099 للحصول على أذن الدفع. Now you can renew your trade license by sending a text message (SMS). Send your trade license number to 9099 (دو/تساعات) للحصول على أذن الدفع. رقم الرخصة 216821. This is a certified e-document issued without signature by the department of Economy and Tourism. Kindly scan the QR Code to verify the certificate.



نشاط الرخصة التجارية / License Activities

مقاولات البناء | تركيب الأسقف المعلقة و القواطع الخفيفة | مقاولات تشييد المنشآت المعدنية | أعمال تخطيط الأرضيات والجدران | أعمال تصميم وتنفيذ الديكور | أعمال التجارة و تركيب الأرضيات الخشبية | تركيب معدات السلامة وإطفاء الحريق | تركيب أنظمة التهوية وتنقية الهواء وصيانتها | تركيب شبكات الأنابيب والتجهيزات التخصصية | تركيب الأدوات والتجهيزات الصحية | أعمال التجهيزات الكهربائية | أعمال تركيب المعدات الكهربائية ومساننها | تركيب المواد المبطنة والمعلقة وإتشار الحريق

Building Contracting | False Ceiling & Light Partitions Installation | Steel Construction Contracting | Floor & Wall Tiling Works | Decoration Design & Implementation | Carpentry & wood Flooring Works | Fire Fighting Safety Equipment Installation | Air-Conditioning, Ventilations & Air Filtration Systems Installation & Maintenance | Specialized Piping & Relat Fittings Contracting | Plumbing & Sanitary Installation | Electrical Fitting Contracting | Electromechanical Equipment Installation and Maintenance | Fire Retardant Lining Materials Installation

العنوان / Address

مستودع بريد 28737 P.O. Box
رقم القطعة 412-305 Parcel ID
البريد الإلكتروني sales.uae@agnice.com Email
هاتف مشترك 971-50-6469099 Mobile No

مكتب رقم 1013-1014 مكتب جاسم ناصر محمد النوبسي - ديرة - الخوايز

ملاحظات / Remarks

مقاولات البناء (رئيسي) + مقاولات تشييد المنشآت المعدنية (رئيسي) + أولي: إصدار تراخيص المشاريع مرتبط بالتراخيص الواردة في شهادة سجل الدعاية الفنية الصادرة من البلدية - الاطلاع على السجل من خلال الرابط: depmart.dem.gov.ae

The Company Shall not Carry on The DCD activities unless approved by Dubai Civil Defence

Print Date 04/02/2025 1561 تاريخ الطباعة Receipt No. يمكنك الآن تجديد رخصتك التجارية من خلال الرسائل القصيرة أرسل رقم الرخصة إلى 0909 (دو/تساعات) للحصول على أذن الدفع. Get FREE access to Zoho One for the first year! أرسل على رقم 9099 للحصول على أذن الدفع. Now you can renew your trade license by sending a text message (SMS). Send your trade license number to 9099 (دو/تساعات) للحصول على أذن الدفع. رقم الرخصة 216821. This is a certified e-document issued without signature by the department of Economy and Tourism. Kindly scan the QR Code to verify the certificate.



LEADERSHIP & OPERATIONS TEAMS

TLM 3, JAFZA South,
BUA 10,000 Sq.Mtr, Eve Ht : 22 Mtr



www.agnice.com/ae

AGNICE
CONTRACTING L.L.C

LEADERSHIP TEAM



Anish Kasim
General Manager

Ensures long-term value for our clients through strategic vision, operational excellence and expertise in delivering high-value industrial projects



Akhilesh Padinhare
Executive Director

Drives strategic growth and market expansion with deep industry insights, ensuring we remain a trusted partner in industrial construction



Lifna Afsal
Finance Manager

Steers financial strategy, risk management and business planning with expertise in corporate governance and investment strategies

"Agnice's leadership team shapes the company's vision through expertise, innovation and an unwavering commitment to excellence. They are seasoned professionals who cultivate a culture of collaboration and drive success at every level of the organization."



Aasim Ameer
Chief Executive Officer



MEET THE TEAM THAT DELIVERS OPERATIONAL EXCELLENCE

"Driving efficient, high-quality and sustainable project execution, our team combines expertise, innovation and an unwavering commitment to excellence, delivering exceptional results for our customers."



R. Lakshmi Pathy
Operations Manager

Project Management Leads



Zabir Khan
Sr. Project Manager



Anil Rao
Sr. Project Manager



Rijo Thomas
Sr. Project Manager



Madan Kumar
Project Manager

Specialist Project Leads



Romiyo T
Sr. MEP Project Manager



Mafakhir. M
MEP Project Manager



Jinu. S
MEP Project Manager

Support Leads



Syed Tahir
Engineering Manager



Saljo Johny
Fire Division Manager



Aju Vijayan
Procurement Manager



Mansoor Ali
HSE Manager



M. Hafiz
QA / QC Manager



Abdul Salam
HR & Admin Manager



Vishnu Biju
Sr. Planning Engineer



OUR WORKFORCE IS OUR STRENGTH

750

+

Powerhouse of professional workforce
delivering world-class construction



600

+

Field experts delivering Precision &
Execution

150

+

Professionals delivering Leadership and
Strategy



The team that ensures seamless execution of projects with focus on efficiency, quality and sustainability. The backbone of our success, combining industry experience, innovative strategies and relentless focus on excellence to deliver outstanding results



OUR FLAGSHIP CUSTOMERS' SHOWCASE

Akzonobel Paint Factory, Al Quoz



www.agnice.com/ae

AGNICE
CONTRACTING L.L.C

TRUSTED PARTNERSHIPS OUR ANCHOR CLIENTS

For over two decades, our key customers have relied on us to design & build their industrial facilities, supporting their industrial expansion across the UAE





COMPETITIVE EDGE

Amro Freight , Dubai Industrial City



www.agnice.com/ae

AGNICE
CONTRACTING L.L.C

ONE STOP INDUSTRIAL CONSTRUCTION SOLUTION

INDUSTRIAL CONTRACTOR

We combine technical expertise, efficient execution strategies and a strong commitment to HSE to deliver complex projects to the highest industry standards

IN-HOUSE MEP DIVISION

We integrate our MEP excellence directly into our projects, for streamlined coordination and maximized performance of services

HIGH-PERFORMANCE CONCRETE SLABS

As experts in high-performance concrete slabs, we deliver durable, precision-engineered flooring solutions that meet the demands of heavy-duty industrial applications

FULL STACK DESIGN & ENGG. DIVISION

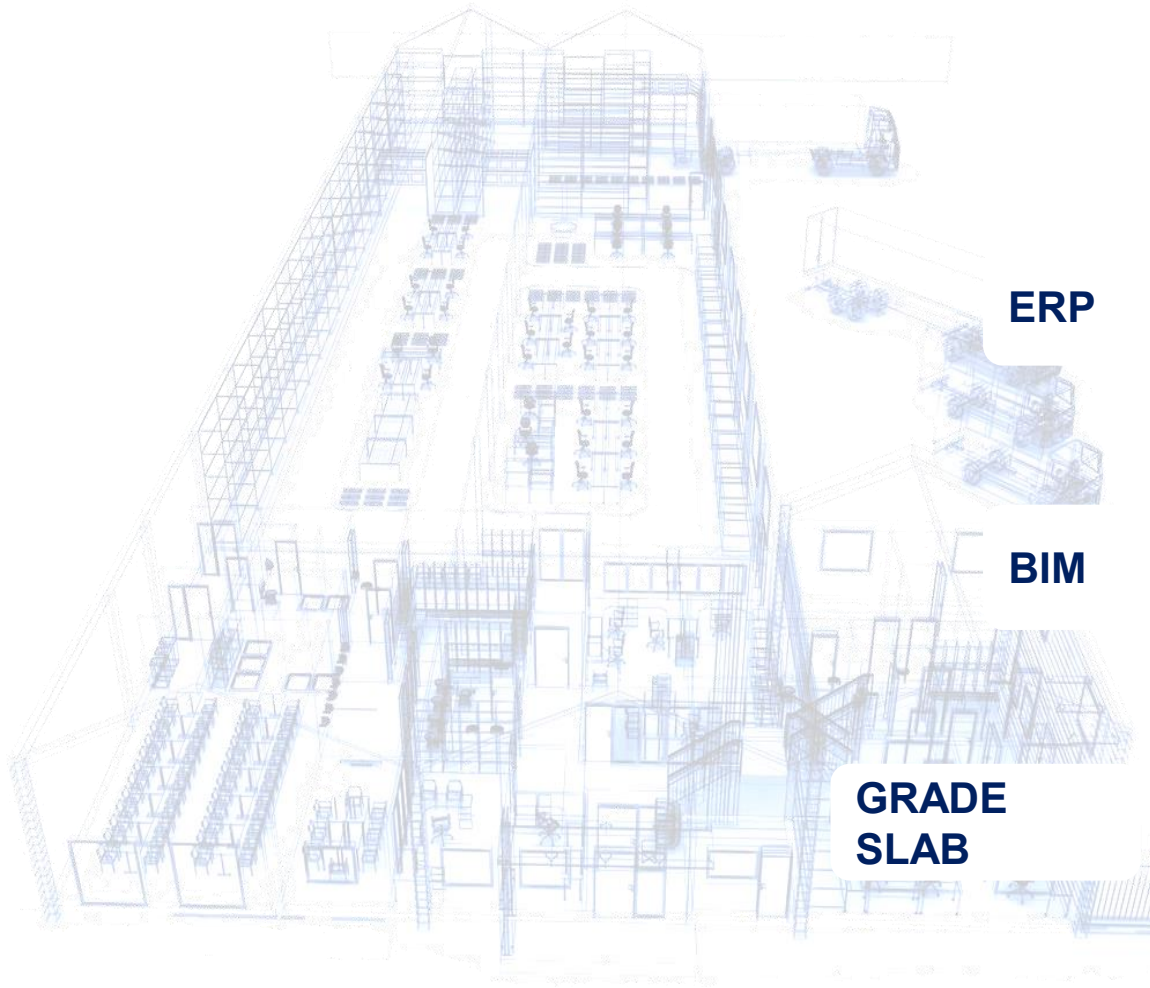
We design/reengineer solutions for complex construction projects with technical agility and solutions that elevate client satisfaction

A+ CATEGORY, DCD APPROVED FIRE DIVISION

We ensure full compliance with Civil Defense regulations and NFPA fire safety standards, delivering certified fire fighting solutions with precision and reliability



SMART SOLUTIONS



Our teams are equipped with advanced technologies and systems to redefine industry standards and transform the way we work

ERP



EFFICIENCY | COLLABORATION | DATA-DRIVEN PROJECT EXECUTION

BIM



PARAMETRIC DESIGN MODELS | INTER-DISCIPLINARY COORDINATION

**GRADE
SLAB**



CUSTOMISED PERFORMANCE FLOORING SOLUTIONS FOR INDUSTRIAL FACILITIES | DUST-FREE | ABRASION RESISTANT



OUR VALUES

WELCOME
GRAND OPENING CEREMONY

SHIMADZU

SHIMADZU

GRAND OPENING

SHIMADZU
Excellence in Science

Shimadzu Regional Office and Warehouse , Jafza North



www.agnice.com/ae

AGNICE
CONTRACTING L.L.C

KEY VALUE DRIVERS

THE VALUES
THAT DRIVE
US
TOWARDS
EXCELLENCE



OUR ACHIEVEMENTS FOR EXCELLENCE IN HSE PRACTICES

“At Agnice, safety isn’t just a practice — it’s a fundamental value that shapes everything we do. These awards mark an important milestone, reminding us that the pursuit of safety is a continuous journey.”

Aasim Ameer
CEO , Agnice Contracting LLC



OUR MILESTONES IN DELIVERING CUSTOMER-CENTRIC EXCELLENCE

Recognized consistently for significant success by consistently putting our customers at the center of our business decisions, services and experiences.

These stand as a testament to the Agnice team's dedication — earning trust through consistent quality and reliability, delivering projects on time, every time and building lasting relationships with our customers.



CERTIFICATIONS FOR ISO COMPLIANCE

OCCUPATIONAL HEALTH & SAFETY MANAGEMENT SYSTEM

Certified in accordance with **ISO 45001:2018**

QUALITY MANAGEMENT SYSTEM

Certified in accordance with **ISO 9001:2015**

ENVIRONMENTAL MANAGEMENT SYSTEM

Certified in accordance with **ISO 14001:2015**

**We are assessed & certified by Swisscert for
ISO compliance until 2028**



SECTORS WE SERVE

**A-MAP G+M Office , Warehouse & G+1 Workers Facility
Saaja , Sharjah**



SECTORS WE SERVE

Our industrial facility development expertise is sector agnostic and caters to a wide range of engineering, construction and development projects



Warehousing & Logistics

- Logistics Warehouses
- Distribution Centers
- Light Industrial Units (LIUs)



Aviation

- Fuel Service Stations
- Airplane Hangers
- Jet Fuel Farms
- Aviation Hydrant Systems
- Terminals



Energy

- Fuel Distribution Centers
- Fuel Storage Centers
- Workshops



Manufacturing

- Industrial Production Plants
- Assembly Lines
- Storage Facilities



Food Supply Chain

- Food Processing Facilities
- Food Storage
- Cold Stores



SUSTAINABILITY RESPONSIBILITY

CASH AND CARRY MIDDLE EAST FZCO

Cash & Carry Middle East , Jafza South



www.agnice.com/ae

AGNICE
CONTRACTING L.L.C

SUSTAINABILITY AT AGNICE



We are committed to responsible water management at our construction sites, implementing efficient processes to minimize waste, recycle water where feasible and optimize usage



We follow structured processes to salvage, refurbish and repurpose non-consumable assets such as tools, office supplies and equipment—ensuring responsible resource use



We consistently strive to meet our procurement needs locally to continue to reduce our carbon footprint

As an USGBC member, sustainability is not just a goal—it's an integral part of how we work. Our sustainability strategy focuses on efficient resource management, innovation in project execution and engagement with the community and support establishments





ONGOING PROJECTS



www.agnice.com/ae

AGNICE
CONTRACTING L.L.C

Aerospace Supply Chain Complex - Phase 8, Dubai South

PROPOSED G + M + 3 FLOORS WAREHOUSE

PROJECT FEATURES – DESIGN & BUILD

PLOT AREA : 7,772 Sq.M STRUCTURAL STEEL : NA

BUILT-UP AREA : 13,508 Sq.M BUILDING HEIGHT : 25 M

CONSULTANT : DESIGN AND BUILD

TIME FOR COMPLETION : 3 + 14 MONTHS

- Complex will have production + warehouse spaces of minimum 75 M² over 3 levels (G+2) with shared loading facility, common reception, central lifts and main corridor at each floor.
- The proposed complex warehouse shall be a modern and cost-effective construction allowing for an integrated supply chain landscape for the Aviation District



CWT-SML Logistics, Dubai South

PROPOSED WAREHOUSE (G+M) AND OFFICE

PROJECT FEATURES – DESIGN & BUILD

PLOT AREA : 19,000 Sq.M **STRUCTURAL STEEL** 1250 TONS

BUILT-UP AREA : 50,318Sq.M **BUILDING HEIGHT** 24 M

CONSULTANT : DCM INTERNATIONAL CONSULTANTS LLC

TIME FOR COMPLETION : 2 + 10 MONTHS

- LEED Silver rating Facilities
- Temperature-controlled facilities
- Fully insulated building structure to keep heat and humidity in checks.
- Mono slope building
- Loading system 16 nos and Covered Car parking 33 nos



LEEAO Trading , Jafza

PROPOSED G+M WAREHOUSE & G+M+1 OFFICE

PROJECT FEATURES – DESIGN & BUILD

PLOT AREA : 25,000 Sq.M **STRUCTURAL STEEL.** 850 Tons

BUILT-UP AREA : 17,500 Sq.M **BUILDING HEIGHT** 24 M

CONSULTANT : ORION ENGINEERING CONSULTANTS

TIME FOR COMPLETION : 2 + 12 MONTHS

- Floor is DM-1 with super flat slab
- Dock levellers – 13
- Docking doors - 13



FG Glass Manufacturing, DIC, Dubai

PROPOSED G FACTORY G+M OFFICE & ALLIED SERVICES

PROJECT FEATURES – DESIGN & BUILD

PLOT AREA : 26,999 Sq.M **STRUCTURAL STEEL** 380 Tons

BUILT-UP AREA : 13,860 Sq.M **BUILDING HEIGHT** 13 M

CONSULTANT : DESIGN HOUSE ENGG CONSULTANTS

TIME FOR COMPLETION : 2 + 8 MONTHS

- Factory Warehouse specializing in high-quality glass mirrors and safety glass manufacturing is equipped with overhead cranes and advanced processing machinery. Its power infrastructure includes 11KV switchgear, HV panel and transformer.



Baskins & Robins By Pure Ice cream, DIC

PROPOSED G+M OFFICE & FACTORY

PROJECT FEATURES –BUILD

PLOT AREA	:	22,293 Sq.M	STRUCTURAL STEEL	608 Tons
BUILT-UP AREA	:	14,987 Sq.M	BUILDING HEIGHT	16 M

CONSULTANT : WINNER HOLISTIC CONSULTANTS
TIME FOR COMPLETION : 2 + 07 MONTHS

- Fully and semi-automated manufacturing systems
- Located in the food and beverage zone of Dubai Industrial City. The plant will occupy 160,000 F² on a 246,000 F² site, boosting Pure Ice Cream's annual production capacity by 300% to 30 million liters..



Shaji Coatings, Technopark (NIP)

PROPOSED FACTORY, WAREHOUSE & OFFICE

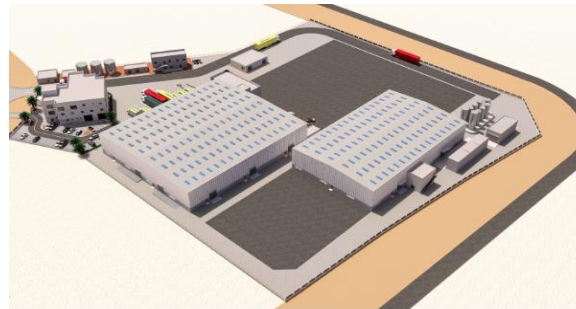
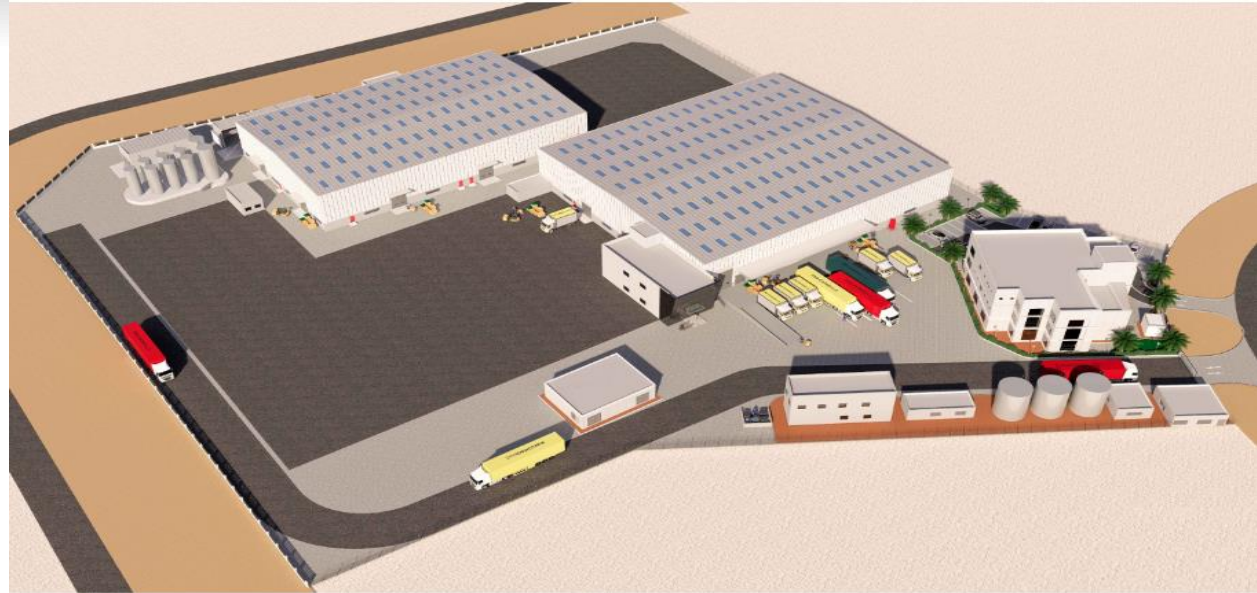
PROJECT FEATURES –BUILD

PLOT AREA : 35,000 Sq.M STRUCTURAL STEEL : 560T

BUILT-UP AREA : 12,523 Sq.M BUILDING HEIGHT : 12 M

CONSULTANT : PRECISE ARCHITECTURAL & CONSULTING ENGINEERS
TIME FOR COMPLETION. : 01 + 12 MONTHS

- High-quality coatings Atex rated Factory for various applications.
- With Overhead Crane (5 tone)



Skyline Resources Trading & Aureum Asset Management, Jebel Ali

PROPOSED WAREHOUSE G+M OFFICE

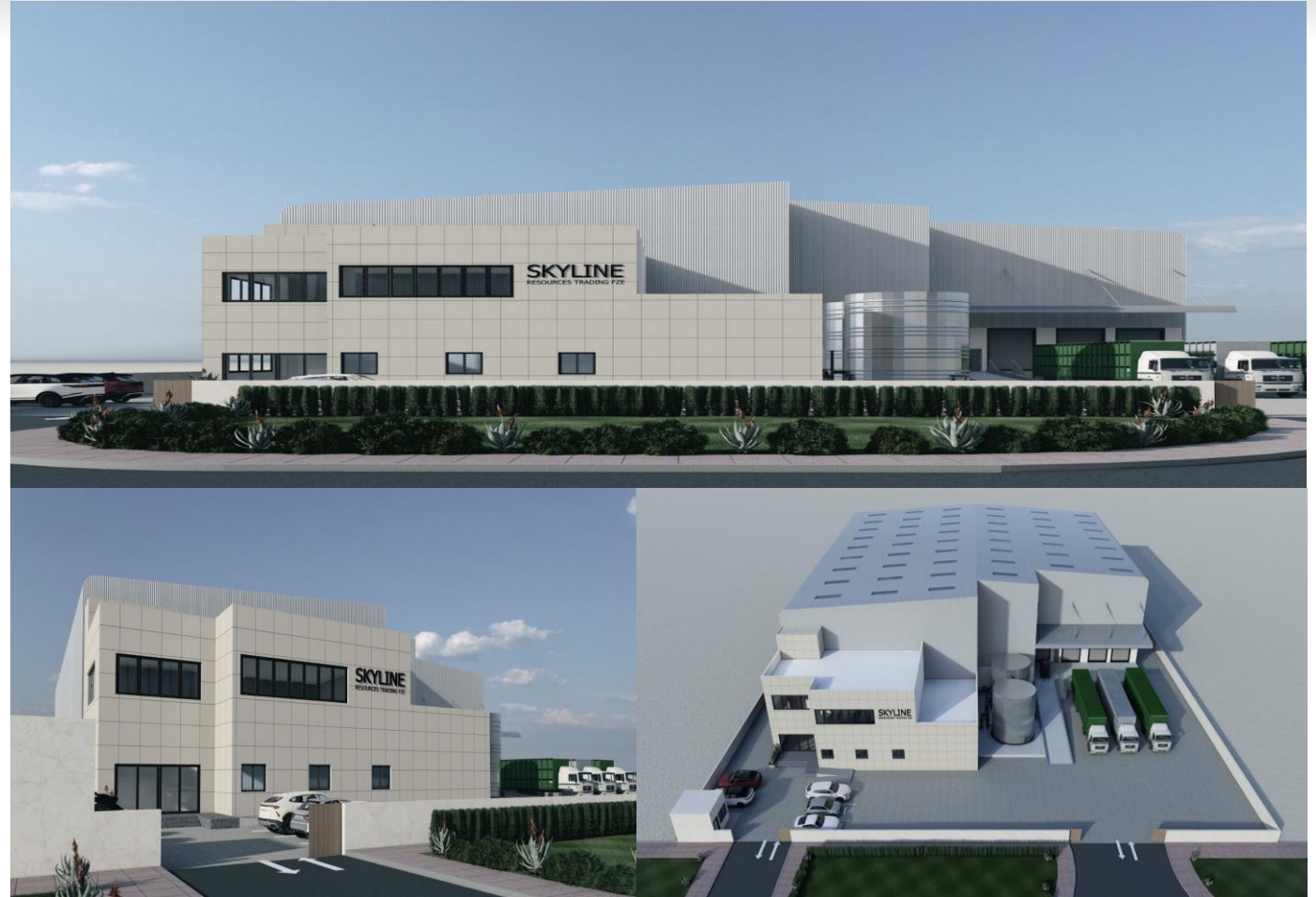
PROJECT FEATURES – DESIGN AND BUILD

PLOT AREA 5,000 Sq.M **STRUCTURAL STEEL :** 135T

BUILT-UP AREA 3,305 Sq.M **BUILDING HEIGHT** 13 M

CONSULTANT DESIGN AND BUILD
TIME FOR COMPLETION. : 03 + 06 MONTHS

- A state-of-the-art logistics facility at Jebel Ali Free Zone (JAFZA) tailored to meet advanced logistics and warehousing needs.





RECENTLY COMPLETED PROJECTS



www.agnice.com/ae

AGNICE
CONTRACTING L.L.C

TLM International , Dubai South

G+M WAREHOUSE & OFFICE

PROJECT FEATURES – DESIGN & BUILD

PLOT AREA : 45,000 Sq.M **STRUCTURAL STEEL** 1,700 Tons

BUILT-UP AREA : 30,000 Sq.M **BUILDING HEIGHT**. 24 / 14 / 12 M

CONSULTANT : DESIGN HOUSE ENGG CONSULTANTS

TIME FOR COMPLETION : 2 + 12 MONTHS

- Largest chemical warehouse in Dubai South
- Designed to store chemicals under categories 2, 3, 5, 6, 8, & 9
- Equipped with a sophisticated firefighting system, including a foam system
- Advanced safety systems to handle hazardous materials
- Supports the growing demand for chemical storage in Dubai South



TLM International , Dubai South – Project Overview

WAREHOUSE OVERVIEW

- State-of-the-art, high-density storage facility.
- Largest chemical warehouse in the Dubai World Central (DWC) area.
- Designed to store chemicals classified under categories 2, 3, 5, 6, 8 and 9.
- Atex rated electrical fittings.
- Fireproof paint system.

KEY FEATURES

- High-density storage capacity for efficient space utilization.
- Advanced safety systems to handle hazardous materials.
- Compliance with international standards for chemical storage.
- Robust infrastructure to support long-term operational needs.

CONSTRUCTION DETAILS

- 1,700 tons of structural steel.
- 45,000 square meters of cladding.
- 15,000 cubic meters of concrete.

FIREFIGHTING SYSTEM

- Equipped with a sophisticated firefighting system, including foam water system.
- In-rack sprinkler system
- Sprinkler grid with 55 kilometers of piping for comprehensive fire protection.

PURPOSE

- Safely stores hazardous materials.
- Ensures compliance with safety and environmental regulations.
- Supports the growing demand for chemical storage in the DWC area.



Freight Care, JAFZA

PROPOSED G+M WAREHOUSE & G+M+1 OFFICE

PROJECT FEATURES – BUILD

VNA STORAGE	8,000 Sq.M	OFFICE BLOCK	2,500 Sq.M
A/C-ED STORAGE	3,500 Sq.M	BUILDING HEIGHT	24 M

CONSULTANT : DESIGN HOUSE ENGG CONSULTANTS
TIME FOR COMPLETION : 10 MONTHS

- Key design features include a very narrow aisle (VNA) storage area in addition to airconditioned storage area
- High-demand distribution center built with 22 truck parking spaces to accommodate rapid product movement
- The project includes deployment of air conditioning system, firefighting system, fire hydrant system and a closed-circuit surveillance system
- G+2 office block housing state-of-the-art interiors.



RHS , Textile City, Al Warsan

G+1 WAREHOUSE & OFFICE

PROJECT FEATURES – BUILD

PLOT AREA	:	8,500 Sq.M	WAREHOUSES	6 Nos
BUILT-UP AREA	:	13,000 Sq.M	BUILDING HEIGHT	13 M

CONSULTANT : WINNER HOLISTIC CONSULTANTS
COMPLETED IN : 12 MONTHS

- Limited site space for material storage and on-site logistics, along with extensive dewatering requirements, made this a challenging fast-track project, completed successfully in 2025, 12 days ahead of schedule.
- High quality, thermally insulated purpose-built units with offices and two cargo entry/exits, forklift ramps and loading dock for containers and trucks.
- Fire rated partitions, sprinkler systems and hose racks to fully comply with NFPA (National Fire Protection Association) requirements.



Cemar International, Dubai

PROPOSED FACTORY & G+M OFFICE

PROJECT FEATURES – BUILD

PLOT AREA 30,000 Sq.M

:

BUILT-UP AREA 14,500 Sq.M

:

BUILDING HEIGHT 16 M

:

CONSULTANT : ALSHANDAGHA ARCH & ENGG CONSULTANTS

TIME FOR COMPLETION. : 12 MONTHS

○ Plot area of 30,000m²

○ Increase production capacity for Cemar by 40% and produce an additional 300 tons of manufacturing for military chassis and armored vehicles.



Masterglobal Logistics, Dubai

PROPOSED G WAREHOUSE & G+M OFFICE

PROJECT FEATURES – DESIGN & BUILD

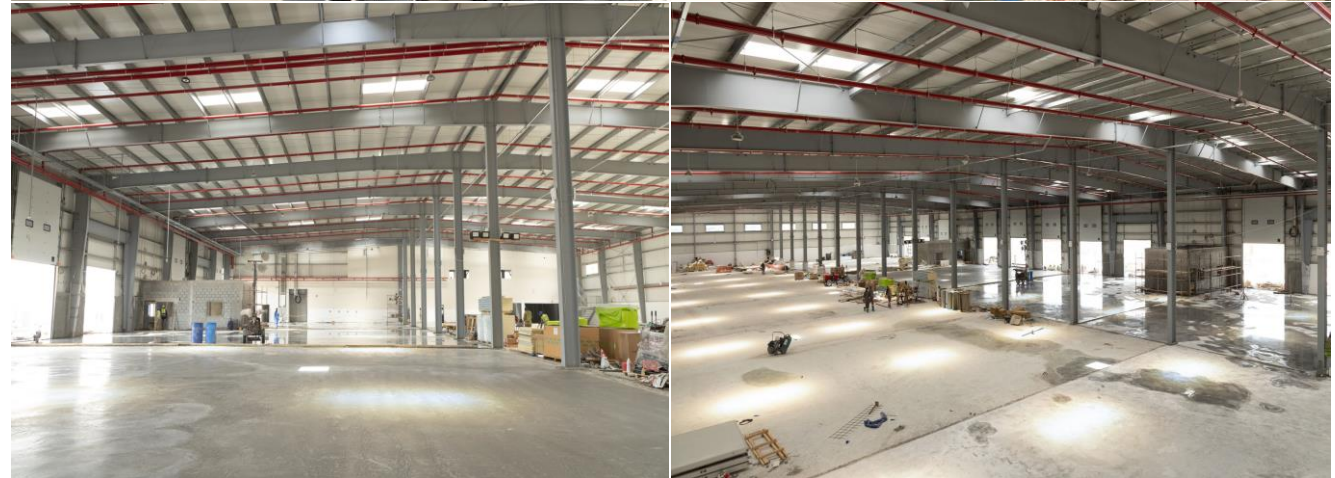
PLOT AREA : 20,000 Sq.M **STRUCTURAL STEEL** 600 Tons

BUILT-UP AREA : 12,000 Sq.M **BUILDING HEIGHT** 15 M

CONSULTANT : DESIGN INTEGRITY

TIME FOR COMPLETION : 2 + 8 MONTHS

- The complex is equipped with a positive power air system to significantly reduce dust contamination and humidity levels
- State-of-the-art security system consisting of full CCTV coverage and card swipe access gates



Shimadzu, Jafza

G WAREHOUSE & M OFFICE

PROJECT FEATURES – BUILD

PLOT AREA 6,500 Sq.M

:

BUILT-UP AREA 3,800 Sq.M

:

CONSULTANT : DESIGN HOUSE ENGG CONSULTANTS

COMPLETED IN : 10 MONTHS

- Project consists of Offices, Warehouse, R&D Labs and Clean Rooms, Xray room with specific non radiating enclosures.
- High-precision facility for the calibration of sensitive medical equipment
- Dedicated exhaust system
- Chemical storage rooms with fire rated walls



Jotun, Al Quoz III

PRODUCTION FACILITY & OFFICE

PROJECT FEATURES – DESIGN & BUILD

PLOT AREA : 5,500 Sq.M

BUILT-UP AREA : 2,300 Sq.M

CONSULTANT : PAX-KENT INTERNATIONAL

COMPLETED IN : 12 MONTHS

- Partial demolition of the existing building and extended area for expansion of production capacity
- The production facility is fully ATEX rated and built into the old facility after partial demolition and integrated as a standalone, isolated unit separate from the rebuilt office space
- The newly built production system is stacked across 3 levels while meeting all of the production processes criteria
- Special services including compressed air, Nitrogen Air and Dust Collector systems.



A-MAP, Sharjah

G+M W/H & G+1 WORKER HOUSING

PROJECT FEATURES – BUILD

PLOT AREA : 22,500 Sq.M

BUILT-UP AREA : 11,000 Sq.M

CONSULTANT : CAPITAL ENGINEERING CONSULTANCY

COMPLETED IN : 12 MONTHS

- Our scope includes Construction of G+M Warehouse, G+M Office, Service Building, G+1 Labor Accommodation and Open shed.
- High-demand distribution center built with truck parking spaces to accommodate rapid product movement



Hans Logistics, Jafza

G+M LOGISTICS FACILITY & OFFICE

PROJECT FEATURES – BUILD

PLOT AREA : 11,500 Sq.M **A/C-ed STORAGE** : 3,000 Sq.M

BUILT-UP AREA : 3,0000 Sq.M **BUILDING HEIGHT** : 24

CONSULTANT : DESIGN HOUSE ENGG CONSULTANTS

COMPLETED IN : 10 MONTHS

○ This flagship project of Hans Logistics at Jafza has a storage capacity of 28,282 pallets configured on a Very Narrow Aisle (VNA) racking system

○ First ever 24m high warehouse facility in JAFZA.



Aamro Freight, DIC

G+M W/H, OFFICE & COLD STORE

PROJECT FEATURES – BUILD

BUILT-UP AREA : 7,800 Sq.M **COLD STORE** : 475 Sq.M

A/C-ed STORAGE : 6,000 Sq.M **BUILDING HEIGHT** : 13.7 M

CONSULTANT : LEYAN ENGINEERING

COMPLETED IN : 12 MONTHS

- The facility is set up with **Conventional Selective Racking** system that is spread over a fully air-conditioned storage area maintained at 22 Deg. Celsius
- The cold store area was built to be maintained at 0-5 Deg. Celsius
- The office building Is a G+1 unit with RCC roofing



IP Gulf, Al Quoz I

FACTORY & WAREHOUSE

PROJECT FEATURES – BUILD

BUILT-UP AREA : 6,000 Sq.M

CONSULTANT : PAX-KENT INTERNATIONAL LLC

COMPLETED IN : 05 MONTHS

- Construction of Powder Coating Factory Building and Warehouse Building
- This project was delivered on fast-track in 5 months.



Cash & Carry, Jafza

RACKED STORAGE WAREHOUSE

PROJECT FEATURES – BUILD

BUILT-UP AREA	5,250 Sq.M	BULK STORAGE	: 2,500 Sq.M
A/C-ed STORAGE	375 Sq.M	FOOD STORAGE	: 700 Sq.M

CONSULTANT : DESIGN HOUSE ENGG CONSULTANTS
COMPLETED IN : 8 MONTHS

- The facility holds a temperature-controlled cargo storage area that is maintained at 18 Deg. Celsius
- We also set out 475 Sq.M of isolated & dedicated storageholding for IMCO maintained at 15-18 Deg. Celsius



Qbake, DIP

G+M FACTORY & WAREHOUSE

PROJECT FEATURES – DESIGN & BUILD

BUILT-UP AREA : 4,650 Sq.M

CONSULTANT : SPACETECH ENGG CONSULTANCY

COMPLETED IN : 10 MONTHS

- We modified the existing shell & core structure of a G+M warehouse into a G+M Factory
- The facility also houses warehouse holding, cold storage and office
- The facility is in use as a Production and cold chain distribution center for Qbake's bakery products.



McCormick, Jafza

G+M FACTORY & WAREHOUSE

PROJECT FEATURES – DESIGN & BUILD

BUILT-UP AREA : 5,575 Sq.M

CONSULTANT : PAX-KENT INTERNATIONAL

COMPLETED IN : 08 MONTHS

- The facility is in use for the manufacture, storage and distribution of spices, seasoning mixes, condiments and other flavorful products to the F&B industry
- Clean Rooms and Hygiene rooms with Labs
- U Crete Flooring
- Special water treatment plant



Jotun, Dubai

G+2+R STAFF ACCOMMODATION

PROJECT FEATURES – DESIGN & BUILD

PLOT AREA : : 2,294 Sq.M **TOTAL ROOMS:** 190

BUILT-UP AREA : 5,500 Sq.M **BUILDING HEIGHT:** 19 M

CONSULTANT : ADG ENGINEERING CONSULTANTS

COMPLETION : 2018



JOTUN STAFF ACCOMMODATION

Dubai, United Arab Emirates

HAS FULFILLED THE REQUIREMENTS OF THE LEED GREEN BUILDING RATING SYSTEM CERTIFICATION ESTABLISHED BY THE U.S. GREEN BUILDING COUNCIL AND VERIFIED BY GREEN BUSINESS CERTIFICATION INC.

LEED v4
BUILDING DESIGN AND CONSTRUCTION: NEW CONSTRUCTION AND MAJOR RENOVATIONS

SILVER

June 2019

Mahesh Ramanijan

MAHESH RAMANIJAN, PRESIDENT & CEO, U.S. GREEN BUILDING COUNCIL,
PRESIDENT & CEO, GREEN BUSINESS CERTIFICATION INC.



Lulu, Dubai Mall

HYPERMARKET FITOUT (CIVIL & MEP)

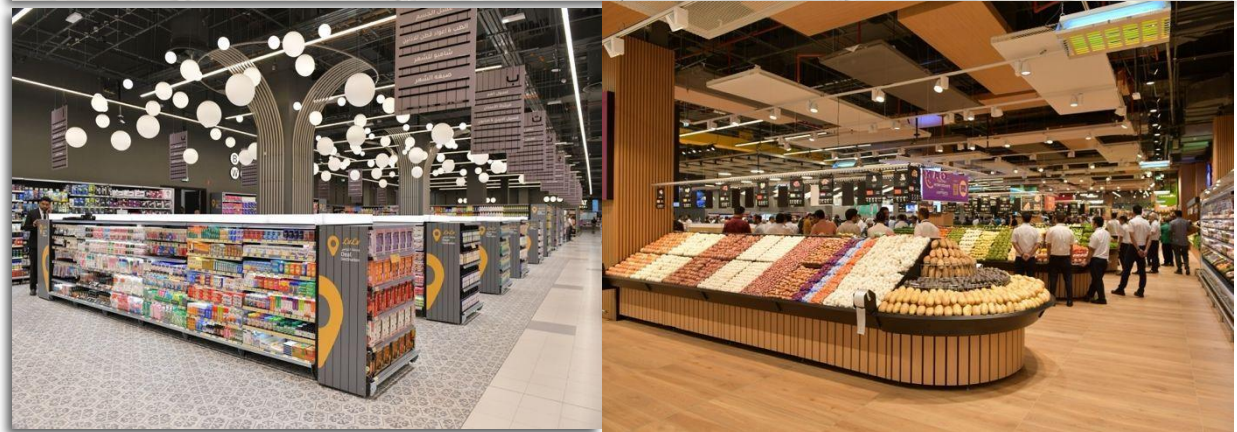
PROJECT FEATURES – DESIGN & BUILD

BUILT-UP AREA : 6,625 Sq.M

CONSULTANT : PIERRE DAMMOUS & PARTNERS

COMPLETED IN : 6 MONTHS

- We reworked the original design to allow for increased operational flexibility and to maximize free space availability.



Carrefour, Al Zahiya Mall

HYPERMARKET FITOUT

PROJECT FEATURES – DESIGN & BUILD

BUILT-UP AREA : 15,100 Sq.M

CONSULTANT : NOTTINGHAM M & E CONSULTING ENGINEERS
COMPLETED IN : 7 MONTHS

○ The project duration was fast-tracked and completed in 213 days.



Carrefour, Masdar

HYPERMARKET FITOUT (CIV. & MEP)

PROJECT FEATURES – DESIGN & BUILD

BUILT-UP AREA : 7,000 Sq.M

CONSULTANT : NOTTINGHAM M & E CONSULTING ENGINEERS
COMPLETED IN : 6 MONTHS

○ The project was fast-tracked and completed in 165 Days





READY TO DELIVER...
...YOUR NEXT PROJECT

